

ACINU Antibody

Cat.#: DF9051
Size: 100ul,200ul

Concn.: 1mg/ml
Source: Rabbit

Mol.Wt.: 152 kDa
Clonality: Polyclonal

Application: WB 1:1000-3000, ELISA(peptide) 1:20000-1:40000
*The optimal dilutions should be determined by the end user.

Reactivity: Human,Mouse,Rat,Monkey

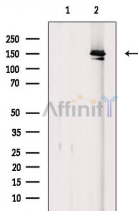
Purification: The antiserum was purified by peptide affinity chromatography using SulfoLink™ Coupling Resin (Thermo Fisher Scientific).

Specificity: ACINU Antibody detects endogenous levels of total ACINU.

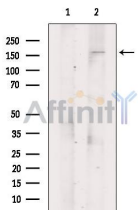
Immunogen: A synthesized peptide derived from human ACINU, corresponding to a region within the internal amino acids.

Uniprot: Q9UKV3

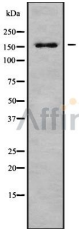
Storage Condition and Buffer: Rabbit IgG in phosphate buffered saline , pH 7.4, 150mM NaCl, 0.02% sodium azide and 50% glycerol.Store at -20 °C.Stable for 12 months from date of receipt.



Western blot analysis of extracts from 293 cells (UV treatment), using ACINU Antibody. The lane on the left was treated with blocking peptide.



Western blot analysis of extracts from Huvec, using ACINU Antibody. The lane on the left was treated with blocking peptide.



Western blot analysis of ACINU using COS7 whole cell lysates

IMPORTANT: For western blot, incubate membrane with diluted primary Ab in 5% w/v milk , 1X TBS, 0.1% Tween@20 at 4°C with gentle shaking, overnight.

For Research Use Only. Not for use in diagnostic and therapeutic procedures. Not for resale without express authorization.