

# ALKBH2 Antibody

Cat.#: DF9073	Concn.: 1mg/ml	Mol.Wt.: 29kDa
Size: 100ul,200ul	Source: Rabbit	Clonality: Polyclonal

**Application:** WB 1:1000-3000, ELISA(peptide) 1:20000-1:40000  
 \*The optimal dilutions should be determined by the end user.

**Reactivity:** Human,Mouse

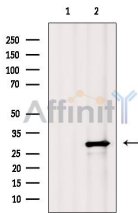
**Purification:** The antiserum was purified by peptide affinity chromatography using SulfoLink™ Coupling Resin (Thermo Fisher Scientific).

**Specificity:** ALKBH2 Antibody detects endogenous levels of total ALKBH2.

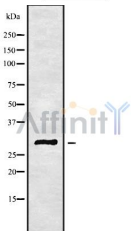
**Immunogen:** A synthesized peptide derived from human ALKBH2, corresponding to a region within the internal amino acids.

**Uniprot:** Q6NS38

**Storage Condition and Buffer:** Rabbit IgG in phosphate buffered saline , pH 7.4, 150mM NaCl, 0.02% sodium azide and 50% glycerol.Store at -20 °C.Stable for 12 months from date of receipt.



Western blot analysis of extracts from EC304 cells, using ALKBH2 Antibody. The lane on the left was treated with blocking peptide.



Western blot analysis of ALKBH2 using HT29 whole cell lysates

**IMPORTANT:** For western blot, incubate membrane with diluted primary Ab in 5% w/v milk , 1X TBS, 0.1% Tween@20 at 4°C with gentle shaking, overnight.