

ACBD5 Antibody

Cat.#: DF9152
Size: 100ul,200ul

Concn.: 1mg/ml
Source: Rabbit

Mol.Wt.: 60 kDa
Clonality: Polyclonal

Application: WB 1:1000-3000, IF/ICC 1:100-1:500, ELISA(peptide)
1:20000-1:40000
*The optimal dilutions should be determined by the end user.

Reactivity: Human,Mouse,Rat

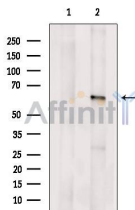
Purification: The antiserum was purified by peptide affinity chromatography using SulfoLink™ Coupling Resin (Thermo Fisher Scientific).

Specificity: ACBD5 Antibody detects endogenous levels of total ACBD5.

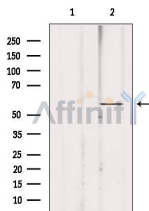
Immunogen: A synthesized peptide derived from human ACBD5, corresponding to a region within the internal amino acids.

Uniprot: Q5T8D3

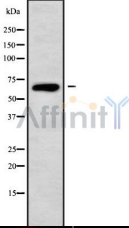
Storage Condition and Buffer: Rabbit IgG in phosphate buffered saline , pH 7.4, 150mM NaCl, 0.02% sodium azide and 50% glycerol.Store at -20 °C.Stable for 12 months from date of receipt.



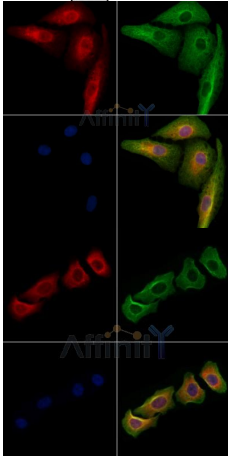
Western blot analysis of extracts from RAW264.7 cells, using ACBD5 Antibody. The lane on the left was treated with blocking peptide.



Western blot analysis of extracts from 293, using ACBD5 Antibody. Lane 1 was treated with the blocking peptide.



Western blot analysis of ACBD5 using LOVO whole cell lysates



DF9152 staining A549 cells by IF/ICC. The samples were fixed with PFA and permeabilized in 0.1% Triton X-100, then blocked in 10% serum for 45 minutes at 25°C. Samples were then incubated with primary Ab(DF9152) and mouse anti-beta tubulin Ab(T0023) for 1 hour at 37°C. An AlexaFluor594 conjugated goat anti-rabbit IgG(H+L) Ab(Red) and an AlexaFluor488 conjugated goat anti-mouse IgG(H+L) Ab(Green) were used as the secondary antibody.

DF9152 staining Hela cells by IF/ICC. The samples were fixed with PFA and permeabilized in 0.1% Triton X-100, then blocked in 10% serum for 45 minutes at 25°C. Samples were then incubated with primary Ab(DF9152 1:200) and mouse anti-beta tubulin Ab(T0023 1:200) for 1 hour at 37°C. An AlexaFluor594 conjugated goat anti-rabbit IgG(H+L) Ab(Red) and an AlexaFluor488 conjugated goat anti-mouse IgG(H+L) Ab(Green) were used as the secondary antibody.

IMPORTANT: For western blot, incubate membrane with diluted primary Ab in 5% w/v milk, 1X TBS, 0.1% Tween@20 at 4°C with gentle shaking, overnight.

For Research Use Only. Not for use in diagnostic and therapeutic procedures. Not for resale without express authorization.