

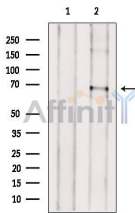
## ACOT11 Antibody

Cat.#: DF9156  
 Size: 100ul,200ul

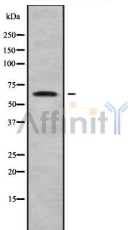
Concn.: 1mg/ml  
 Source: Rabbit

Mol.Wt.: 68 kDa  
 Clonality: Polyclonal

- Application:** WB 1:1000-3000, ELISA(peptide) 1:20000-1:40000  
 \*The optimal dilutions should be determined by the end user.
- Reactivity:** Human,Mouse,Rat
- Purification:** The antiserum was purified by peptide affinity chromatography using SulfoLink™ Coupling Resin (Thermo Fisher Scientific).
- Specificity:** ACOT11 Antibody detects endogenous levels of total ACOT11.
- Immunogen:** A synthesized peptide derived from human ACOT11, corresponding to a region within the internal amino acids.
- Uniprot:** Q8WXI4
- Storage Condition and Buffer:** Rabbit IgG in phosphate buffered saline , pH 7.4, 150mM NaCl, 0.02% sodium azide and 50% glycerol.Store at -20 °C.Stable for 12 months from date of receipt.



Western blot analysis of extracts from Rat brain, using ACOT11 Antibody. The lane on the left was treated with blocking peptide.



Western blot analysis of ACOT11 using A549 whole cell lysates

**IMPORTANT:** For western blot, incubate membrane with diluted primary Ab in 5% w/v milk , 1X TBS, 0.1% Tween@20 at 4°C with gentle shaking, overnight.