

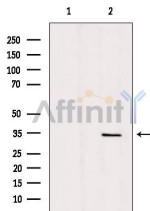
## SLC25A5 Antibody

Cat.#: DF9179  
Size: 100ul,200ul

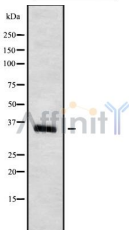
Concn.: 1mg/ml  
Source: Rabbit

Mol.Wt.: 33 kDa  
Clonality: Polyclonal

- Application:** WB 1:1000-3000, ELISA(peptide) 1:20000-1:40000  
\*The optimal dilutions should be determined by the end user.
- Reactivity:** Human,Mouse,Rat
- Purification:** The antiserum was purified by peptide affinity chromatography using SulfoLink™ Coupling Resin (Thermo Fisher Scientific).
- Specificity:** SLC25A5 Antibody detects endogenous levels of total SLC25A5.
- Immunogen:** A synthesized peptide derived from human SLC25A5, corresponding to a region within the internal amino acids.
- Uniprot:** P05141
- Storage Condition and Buffer:** Rabbit IgG in phosphate buffered saline , pH 7.4, 150mM NaCl, 0.02% sodium azide and 50% glycerol.Store at -20 °C.Stable for 12 months from date of receipt.



Western blot analysis of extracts from mouse brain, using SLC25A5 Antibody. Lane 1 was treated with the blocking peptide.



Western blot analysis SLC25A5 using COLO205 whole cell lysates

**IMPORTANT:** For western blot, incubate membrane with diluted primary Ab in 5% w/v milk , 1X TBS, 0.1% Tween@20 at 4°C with gentle shaking, overnight.