

AFF4 Antibody

Cat.#: DF9180
Size: 100ul,200ul

Concn.: 1mg/ml
Source: Rabbit

Mol.Wt.: 127kDa
Clonality: Polyclonal

Application: WB 1:1000-3000, IHC 1:200, ELISA(peptide)
1:20000-1:40000
*The optimal dilutions should be determined by the end user.

Reactivity: Human,Mouse

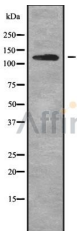
Purification: The antiserum was purified by peptide affinity chromatography using SulfoLink™ Coupling Resin (Thermo Fisher Scientific).

Specificity: AFF4 Antibody detects endogenous levels of total AFF4.

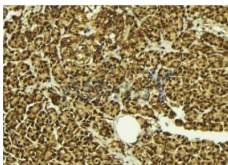
Immunogen: A synthesized peptide derived from human AFF4, corresponding to a region within C-terminal amino acids.

Uniprot: Q9UHB7

Storage Condition and Buffer: Rabbit IgG in phosphate buffered saline , pH 7.4, 150mM NaCl, 0.02% sodium azide and 50% glycerol.Store at -20 °C.Stable for 12 months from date of receipt.



Western blot analysis of AFF4 using NIH-3T3 whole cell lysates



DF9180 at 1/100 staining Mouse pancreas tissue by IHC-P. The sample was formaldehyde fixed and a heat mediated antigen retrieval step in citrate buffer was performed. The sample was then blocked and incubated with the antibody for 1.5 hours at 22°C. An HRP conjugated goat anti-rabbit antibody was used as the secondary antibody.

IMPORTANT: For western blot, incubate membrane with diluted primary Ab in 5% w/v milk , 1X TBS, 0.1% Tween@20 at 4°C with gentle shaking, overnight.