

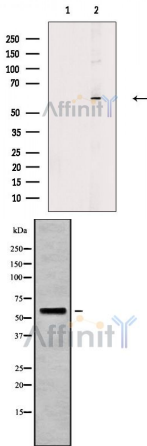
ARSB Antibody

Cat.#: DF9227
 Size: 100ul,200ul

Concn.: 1mg/ml
 Source: Rabbit

Mol.Wt.: 60 kDa
 Clonality: Polyclonal

- Application:** WB 1:1000-3000, ELISA(peptide) 1:20000-1:40000
 *The optimal dilutions should be determined by the end user.
- Reactivity:** Human,Mouse,Rat
- Purification:** The antiserum was purified by peptide affinity chromatography using SulfoLink™ Coupling Resin (Thermo Fisher Scientific).
- Specificity:** ARSB Antibody detects endogenous levels of total ARSB.
- Immunogen:** A synthesized peptide derived from human ARSB, corresponding to a region within C-terminal amino acids.
- Uniprot:** P15848
- Storage Condition and Buffer:** Rabbit IgG in phosphate buffered saline , pH 7.4, 150mM NaCl, 0.02% sodium azide and 50% glycerol.Store at -20 °C.Stable for 12 months from date of receipt.



Western blot analysis of extracts from A549 cells, using ARSB Antibody. The lane on the left was treated with blocking peptide.

Western blot analysis of ARSB using Jurkat whole cell lysates

IMPORTANT: For western blot, incubate membrane with diluted primary Ab in 5% w/v milk , 1X TBS, 0.1% Tween@20 at 4°C with gentle shaking, overnight.