

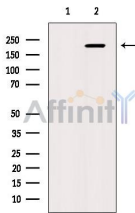
CAMTA1 Antibody

Cat.#: DF9313
 Size: 100ul,200ul

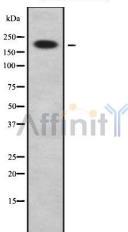
Concn.: 1mg/ml
 Source: Rabbit

Mol.Wt.: 184kDa
 Clonality: Polyclonal

- Application:** WB 1:1000-3000, ELISA(peptide) 1:20000-1:40000
 *The optimal dilutions should be determined by the end user.
- Reactivity:** Human,Mouse
- Purification:** The antiserum was purified by peptide affinity chromatography using SulfoLink™ Coupling Resin (Thermo Fisher Scientific).
- Specificity:** CAMTA1 Antibody detects endogenous levels of total CAMTA1.
- Immunogen:** A synthesized peptide derived from human CAMTA1, corresponding to a region within the internal amino acids.
- Uniprot:** Q9Y6Y1
- Storage Condition and Buffer:** Rabbit IgG in phosphate buffered saline , pH 7.4, 150mM NaCl, 0.02% sodium azide and 50% glycerol.Store at -20 °C.Stable for 12 months from date of receipt.



Western blot analysis of extracts from HepG2, using CAMTA1 Antibody. The lane on the left was treated with blocking peptide.



Western blot analysis of CAMTA1 using K562 whole cell lysates

IMPORTANT: For western blot, incubate membrane with diluted primary Ab in 5% w/v milk , 1X TBS, 0.1% Tween@20 at 4°C with gentle shaking, overnight.