

C1QL3 Antibody

Cat.#: DF9408
Size: 100ul,200ul

Concn.: 1mg/ml
Source: Rabbit

Mol.Wt.: 27 kDa
Clonality: Polyclonal

Application: WB 1:1000-3000, ELISA(peptide) 1:20000-1:40000
*The optimal dilutions should be determined by the end user.

Reactivity: Human,Mouse

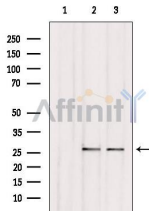
Purification: The antiserum was purified by peptide affinity chromatography using SulfoLink™ Coupling Resin (Thermo Fisher Scientific).

Specificity: C1QL3 Antibody detects endogenous levels of total C1QL3.

Immunogen: A synthesized peptide derived from human C1QL3, corresponding to a region within the internal amino acids.

Uniprot: Q5VWW1

Storage Condition and Buffer: Rabbit IgG in phosphate buffered saline , pH 7.4, 150mM NaCl, 0.02% sodium azide and 50% glycerol.Store at -20 °C.Stable for 12 months from date of receipt.

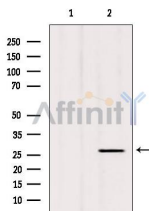


Western blot analysis of extracts from various samples, using C1QL3 Antibody.

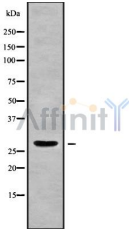
Lane 1: 293 treated with blocking peptide.

Lane 2: 293;

Lane 3: HeLa;



Western blot analysis of extracts from hybridoma cells, using C1QL3 Antibody. Lane 1 was treated with the blocking peptide.



Western blot analysis of C1QL3 using Jurkat whole cell lysates

IMPORTANT: For western blot, incubate membrane with diluted primary Ab in 5% w/v milk , 1X TBS, 0.1% Tween@20 at 4°C with gentle shaking, overnight.

For Research Use Only. Not for use in diagnostic and therapeutic procedures. Not for resale without express authorization.