

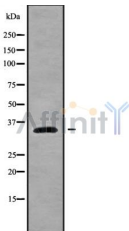
HSD17B12 Ab

Cat.#: DF9505
Size: 100ul,200ul

Concn.: 1mg/ml
Source: Rabbit

Mol.Wt.: 34 kDa
Clonality: Polyclonal

Application:	WB 1:1000-3000
Reactivity:	Human
Purification:	The antiserum was purified by peptide affinity chromatography using SulfoLink™ Coupling Resin (Thermo Fisher Scientific).
Specificity:	HSD17B12 Ab detects endogenous levels of total HSD17B12.
Immunogen:	A synthesized peptide derived from human HSD17B12.
Uniprot:	Q53GQ0
Subcellular Location:	Endoplasmic reticulum membrane.
Tissue Specificity:	Expressed in most tissues tested. Highly expressed in the ovary and mammary. Expressed in platelets.
Similarity:	The di-lysine motif confers endoplasmic reticulum localization for type I membrane proteins.Belongs to the short-chain dehydrogenases/reductases (SDR) family. 17-beta-HSD 3 subfamily.
Storage Condition and Buffer:	Rabbit IgG in phosphate buffered saline , pH 7.4, 150mM NaCl, 0.02% sodium azide and 50% glycerol.Store at -20 °C.Stable for 12 months from date of receipt.



Western blot analysis of HSD17B12 using A549 whole cell lysates

IMPORTANT: For western blot, incubate membrane with diluted primary Ab in 5% w/v milk , 1X TBS, 0.1% Tween@20 at 4°C with gentle shaking, overnight.

For Research Use Only. Not for use in diagnostic and therapeutic procedures. Not for resale without express authorization.