

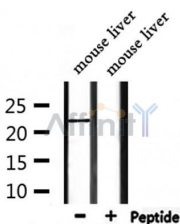
## FGF9 Ab

Cat.#: DF9532  
 Size: 100ul,200ul

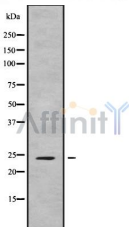
Concn.: 1mg/ml  
 Source: Rabbit

Mol.Wt.: 23 kDa  
 Clonality: Polyclonal

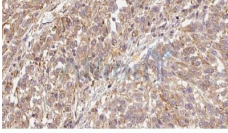
- Application:** WB 1:1000-3000 IHC 1:200
- Reactivity:** Human,Mouse,Rat
- Purification:** The antiserum was purified by peptide affinity chromatography using SulfoLink™ Coupling Resin (Thermo Fisher Scientific).
- Specificity:** FGF9 Ab detects endogenous levels of total FGF9.
- Immunogen:** A synthesized peptide derived from human FGF9.
- Uniprot:** P31371
- Subcellular Location:** Secreted.
- Tissue Specificity:** Glial cells.
- Similarity:** Belongs to the heparin-binding growth factors family.
- Storage Condition and Buffer:** Rabbit IgG in phosphate buffered saline , pH 7.4, 150mM NaCl, 0.02% sodium azide and 50% glycerol.Store at -20 °C.Stable for 12 months from date of receipt.



Western blot analysis of extracts from mouse liver, using FGF9 Ab.



Western blot analysis FGF9 using Jurkat whole cell lysates



DF9532 at 1/100 staining Human Melanoma tissue by IHC-P. The sample was formaldehyde fixed and a heat mediated antigen retrieval step in citrate buffer was performed. The sample was then blocked and incubated with the Ab for 1.5 hours at 22°C. An HRP conjugated goat anti-rabbit Ab was used as the secondary.

**IMPORTANT:** For western blot, incubate membrane with diluted primary Ab in 5% w/v milk , 1X TBS, 0.1% Tween@20 at 4°C with gentle shaking, overnight.

For Research Use Only. Not for use in diagnostic and therapeutic procedures. Not for resale without express authorization.