

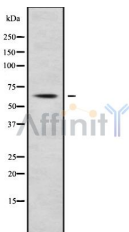
TRIM23 Ab

Cat.#: DF9551
Size: 100ul,200ul

Concn.: 1mg/ml
Source: Rabbit

Mol.Wt.: 64 kDa
Clonality: Polyclonal

Application:	WB 1:1000-3000
Reactivity:	Human,Mouse,Rat
Purification:	The antiserum was purified by peptide affinity chromatography using SulfoLink™ Coupling Resin (Thermo Fisher Scientific).
Specificity:	TRIM23 Ab detects endogenous levels of total TRIM23.
Immunogen:	A synthesized peptide derived from human TRIM23.
Uniprot:	P36406
Subcellular Location:	Endomembrane system. Golgi apparatus membrane. Lysosome membrane. Membrane-associated with the Golgi complex and lysosomal structures.
Similarity:	The RING-type zinc finger domain is responsible for E3 ubiquitin ligase activity. This domain is catalytically active as a dimer.In the C-terminal section; belongs to the small GTPase superfamily. Arf family.
Storage Condition and Buffer:	Rabbit IgG in phosphate buffered saline , pH 7.4, 150mM NaCl, 0.02% sodium azide and 50% glycerol.Store at -20 °C.Stable for 12 months from date of receipt.



Western blot analysis of TRIM23 using HeLa whole cell lysates

IMPORTANT: For western blot, incubate membrane with diluted primary Ab in 5% w/v milk , 1X TBS, 0.1% Tween@20 at 4°C with gentle shaking, overnight.

For Research Use Only. Not for use in diagnostic and therapeutic procedures. Not for resale without express authorization.