

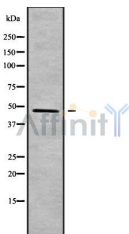
## HNRPDL Ab

Cat.#: DF9571  
Size: 100ul,200ul

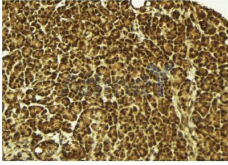
Concn.: 1mg/ml  
Source: Rabbit

Mol.Wt.: 46 kDa  
Clonality: Polyclonal

Application:	WB 1:1000-3000 IHC 1:200
Reactivity:	Human,Mouse,Rat
Purification:	The antiserum was purified by peptide affinity chromatography using SulfoLink™ Coupling Resin (Thermo Fisher Scientific).
Specificity:	HNRPDL Ab detects endogenous levels of total HNRPDL.
Immunogen:	A synthesized peptide derived from human HNRPDL.
Uniprot:	O14979
Subcellular Location:	Nucleus. Cytoplasm. Shuttles between the nucleus and the cytoplasm in a TNPO1-dependent manner.
Tissue Specificity:	Expressed in heart, brain, placenta, lung, liver, skeletal muscle, kidney, pancreas, spleen, thymus, prostate, testis, ovary, small intestine, colon and leukocytes. Expressed in myeloid leukemia, gastric adenocarcinoma, cervical carcinoma, hepatoma, fibrosarcoma, colon adenocarcinoma, epidermoid carcinoma, osteosarcoma and urinary bladder carcinoma cells.
Storage Condition and Buffer:	Rabbit IgG in phosphate buffered saline , pH 7.4, 150mM NaCl, 0.02% sodium azide and 50% glycerol.Store at -20 °C.Stable for 12 months from date of receipt.



Western blot analysis of HNRPDL using LOVO whole cell lysates



DF9571 at 1/100 staining Mouse pancreas tissue by IHC-P. The sample was formaldehyde fixed and a heat mediated antigen retrieval step in citrate buffer was performed. The sample was then blocked and incubated with the Ab for 1.5 hours at 22°C. An HRP conjugated goat anti-rabbit Ab was used as the secondary.

**IMPORTANT:** For western blot, incubate membrane with diluted primary Ab in 5% w/v milk , 1X TBS, 0.1% Tween@20 at 4°C with gentle shaking, overnight.

For Research Use Only. Not for use in diagnostic and therapeutic procedures. Not for resale without express authorization.