

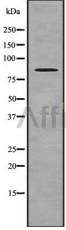
## **NPHP1 Ab**

Cat.#: DF9678  
Size: 100ul,200ul

Concn.: 1mg/ml  
Source: Rabbit

Mol.Wt.: 83 kDa  
Clonality: Polyclonal

Application:	WB 1:1000-3000
Reactivity:	Human,Mouse
Purification:	The antiserum was purified by peptide affinity chromatography using SulfoLink™ Coupling Resin (Thermo Fisher Scientific).
Specificity:	NPHP1 Ab detects endogenous levels of total NPHP1.
Immunogen:	A synthesized peptide derived from human NPHP1.
Uniprot:	O15259
Subcellular Location:	Cell junction, adherens junction. Cell projection, cilium. Cytoplasm, cytoskeleton, cilium axoneme. Cell junction, tight junction. Colocalizes with E-cadherin and BCAR1 at or near the cell-cell adherens junctions (By similarity). Localized to respiratory cilia axoneme. Localized to the transition zone of respiratory cilia, photoreceptor-connecting cilia and renal monocilia. In cultured renal cells, it localizes diffusely in the cytoplasm but, as cells approach confluence, it accumulates to basolateral tight junctions.
Tissue Specificity:	Widespread expression, with highest levels in pituitary gland, spinal cord, thyroid gland, testis, skeletal muscle, lymph node and trachea. Weakly expressed in heart, kidney and pancreas. Expressed in nasal epithelial cells (at protein level).
Similarity:	The SH3 domain mediates the stable interaction with Cas.Belongs to the nephrocystin-1 family.
Storage Condition and Buffer:	Rabbit IgG in phosphate buffered saline , pH 7.4, 150mM NaCl, 0.02% sodium azide and 50% glycerol.Store at -20 °C.Stable for 12 months from date of receipt.



Western blot analysis NPHP1 using HepG2 whole cell lysates

**IMPORTANT:** For western blot, incubate membrane with diluted primary Ab in 5% w/v milk , 1X TBS, 0.1% Tween@20 at 4°C with gentle shaking, overnight.

For Research Use Only. Not for use in diagnostic and therapeutic procedures. Not for resale without express authorization.