

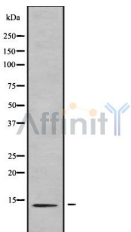
CCL27 Ab

Cat.#: DF9916
Size: 100ul,200ul

Concn.: 1mg/ml
Source: Rabbit

Mol.Wt.: 13 kDa
Clonality: Polyclonal

Application:	WB 1:1000-3000
Reactivity:	Human
Purification:	The antiserum was purified by peptide affinity chromatography using SulfoLink™ Coupling Resin (Thermo Fisher Scientific).
Specificity:	CCL27 Ab detects endogenous levels of total CCL27.
Immunogen:	A synthesized peptide derived from human CCL27.
Uniprot:	Q9Y4X3
Subcellular Location:	Extracellular region or secreted;
Tissue Specificity:	Testis, thymus, placenta, ovary and skin.
Similarity:	Belongs to the intercrine beta (chemokine CC) family.
Storage Condition and Buffer:	Rabbit IgG in phosphate buffered saline , pH 7.4, 150mM NaCl, 0.02% sodium azide and 50% glycerol.Store at -20 °C.Stable for 12 months from date of receipt.



Western blot analysis of CCL27 using Jurkat whole cell lysates

IMPORTANT: For western blot, incubate membrane with diluted primary Ab in 5% w/v milk , 1X TBS, 0.1% Tween@20 at 4°C with gentle shaking, overnight.

For Research Use Only. Not for use in diagnostic and therapeutic procedures. Not for resale without express authorization.