

CXCL5 Ab

Cat.#: DF9919
 Size: 100ul,200ul

Concn.: 1mg/ml
 Source: Rabbit

Mol.Wt.: 12 kDa
 Clonality: Polyclonal

Application: WB 1:1000-3000

Reactivity: Human,Rat

Purification: The antiserum was purified by peptide affinity chromatography using SulfoLink™ Coupling Resin (Thermo Fisher Scientific).

Specificity: CXCL5 Ab detects endogenous levels of total CXCL5.

Immunogen: A synthesized peptide derived from human CXCL5.

Uniprot: P42830

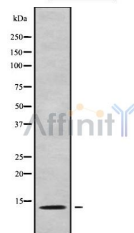
Subcellular Location: Secreted.

Similarity: Belongs to the intercrine alpha (chemokine Cx) family.

Storage Condition and Buffer: Rabbit IgG in phosphate buffered saline , pH 7.4, 150mM NaCl, 0.02% sodium azide and 50% glycerol.Store at -20 °C.Stable for 12 months from date of receipt.



Western blot analysis of extracts from C6, using CXCL5 Ab. The lane on the left was treated with blocking peptide.



Western blot analysis of CXCL5 using RAW264.7 whole cell lysates

IMPORTANT: For western blot, incubate membrane with diluted primary Ab in 5% w/v milk , 1X TBS, 0.1% Tween@20 at 4°C with gentle shaking, overnight.



Affinity Biosciences

website: www.affbiotech.com

order: order@affbiotech.com

For Research Use Only. Not for use in diagnostic and therapeutic procedures. Not for resale without express authorization.