

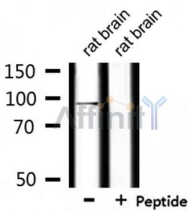
USP16 Ab

Cat.#: DF9983
 Size: 100ul,200ul

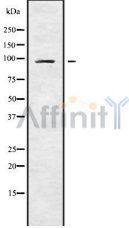
Concn.: 1mg/ml
 Source: Rabbit

Mol.Wt.: 94 kDa
 Clonality: Polyclonal

Application:	WB 1:1000-3000, IF/ICC 1:100-1:500
Reactivity:	Human,Mouse,Rat
Purification:	The antiserum was purified by peptide affinity chromatography using SulfoLink™ Coupling Resin (Thermo Fisher Scientific).
Specificity:	USP16 Ab detects endogenous levels of total USP16.
Immunogen:	A synthesized peptide derived from human USP16.
Uniprot:	Q9Y5T5
Subcellular Location:	Nucleus.
Tissue Specificity:	Present in all the tissues examined including fetal brain, lung, liver, kidney, and adult heart, brain, placenta, lung, liver, skeletal muscle, kidney and pancreas.
Similarity:	The UBP-type zinc finger binds 3 zinc ions that form a pair of cross-braced ring fingers encapsulated within a third zinc finger in the primary structure. It recognizes the C-terminal tail of free ubiquitin.Belongs to the peptidase C19 family. USP16 subfamily.
Storage Condition and Buffer:	Rabbit IgG in phosphate buffered saline , pH 7.4, 150mM NaCl, 0.02% sodium azide and 50% glycerol.Store at -20 °C.Stable for 12 months from date of receipt.



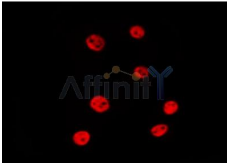
Western blot analysis of extracts from rat brain, using USP16 Ab.



Western blot analysis USP16 using K562 whole cell lysates



DF9983 staining HepG2 by IF/ICC. The sample were fixed with PFA and permeabilized in 0.1% Triton X-100, then blocked in 10% serum for 45 minutes at 25°C. The primary Ab was diluted at 1/200 and incubated with the sample for 1 hour at 37°C. An Alexa Fluor 594 conjugated goat anti-rabbit IgG (H+L) Ab, diluted at 1/600, was used as the secondary Ab.



DF9983 staining 293T by IF/ICC. The sample were fixed with PFA and permeabilized in 0.1% Triton X-100, then blocked in 10% serum for 45 minutes at 25°C. The primary Ab was diluted at 1/200 and incubated with the sample for 1 hour at 37°C. An Alexa Fluor 594 conjugated goat anti-rabbit IgG (H+L) Ab, diluted at 1/600, was used as the secondary Ab.

IMPORTANT: For western blot, incubate membrane with diluted primary Ab in 5% w/v milk, 1X TBS, 0.1% Tween@20 at 4°C with gentle shaking, overnight.

For Research Use Only. Not for use in diagnostic and therapeutic procedures. Not for resale without express authorization.