

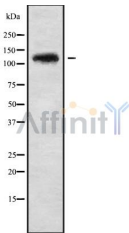
UBE4A Ab

Cat.#: DF9996
Size: 100ul,200ul

Concn.: 1mg/ml
Source: Rabbit

Mol.Wt.: 123 kDa
Clonality: Polyclonal

Application:	WB 1:1000-3000
Reactivity:	Human,Mouse,Rat
Purification:	The antiserum was purified by peptide affinity chromatography using SulfoLink™ Coupling Resin (Thermo Fisher Scientific).
Specificity:	UBE4A Ab detects endogenous levels of total UBE4A.
Immunogen:	A synthesized peptide derived from human UBE4A.
Uniprot:	Q14139
Similarity:	The U-box domain is required for the ubiquitin protein ligase activity.Belongs to the ubiquitin conjugation factor E4 family.
Storage Condition and Buffer:	Rabbit IgG in phosphate buffered saline , pH 7.4, 150mM NaCl, 0.02% sodium azide and 50% glycerol.Store at -20 °C.Stable for 12 months from date of receipt.



Western blot analysis UBE4A using HepG2 whole cell lysates

IMPORTANT: For western blot, incubate membrane with diluted primary Ab in 5% w/v milk , 1X TBS, 0.1% Tween@20 at 4°C with gentle shaking, overnight.

For Research Use Only. Not for use in diagnostic and therapeutic procedures. Not for resale without express authorization.