

**PAA868Ra01**

**Polyclonal Antibody to Endothelial NOS (eNOS)**

**Organism Species: *Rattus norvegicus* (Rat)**

***Instruction manual***

FOR RESEARCH USE ONLY

NOT FOR USE IN CLINICAL DIAGNOSTIC PROCEDURES

---

12th Edition (Revised in Aug, 2016)

### **[ PROPERTIES ]**

**Source:** Polyclonal antibody preparation

**Host:** Rabbit

**Purification:** Antigen-specific affinity chromatography followed by Protein A affinity chromatography

**Traits:** Liquid

**Concentration:** 1mg/ml

**UOM:** 100µg(100µl)

**Cross Reactivity:** Human; Mouse; Rabbit; Canine; Pig; Bovine.

**Applications:** WB; IHC; ICC; IP.

### **[ IMMUNOGEN ]**

**Immunogen:** Recombinant eNOS (Ala519~Phe702) expressed in *E.coli*

**Accession No.:** RPA868Ra01

### **[ APPLICATIONS ]**

Western blotting: 0.3-3µg/mL

Immunohistochemistry: 5-30µg/mL

Immunocytochemistry: 5-30µg/mL

Optimal working dilutions must be determined by end user.

### **[ FORMULATION ]**

**Form & Buffer:** Supplied as solution form in 0.01M PBS, pH7.4, containing 0.05% Proclin-300, 50% glycerol.

### **[ STORAGE AND STABILITY ]**

**Storage:** Avoid repeated freeze/thaw cycles.

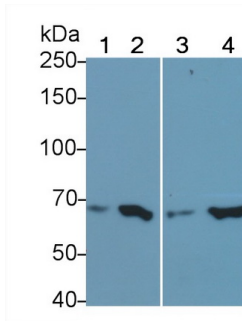
Store at 4°C for frequent use.

Aliquot and store at -20°C for 12 months.

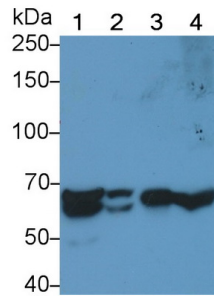
**Stability Test:** The thermal stability is described by the loss rate. The loss rate was determined by accelerated thermal degradation test, that is, incubate the protein at 37°C for 48h, and no

obvious degradation and precipitation were observed. The loss rate is less than 5% within the expiration date under appropriate storage condition.

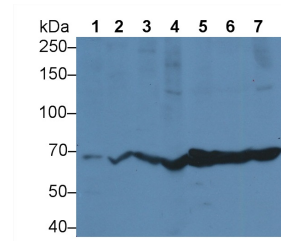
**[ IDENTIFICATION ]**



Western Blot; Sample: Lane1: Canine Liver lysate; Lane2: Canine Heart lysate; Lane3: Bovine Liver lysate; Lane4: Bovine Heart lysate  
 Primary Ab: 0.3µg/ml Rabbit Anti-Rat eNOS Antibody  
 Second Ab: 0.2µg/mL HRP-Linked Caprine Anti-Rabbit IgG Polyclonal Antibody (Catalog: SAA544Rb19)



Western Blot; Sample: Lane1: Rat Placenta lysate; Lane2: Mouse Placenta lysate; Lane3: Porcine Liver lysate; Lane4: ECV304 cell lysate  
 Primary Ab: 0.3µg/ml Rabbit Anti-Rat eNOS Antibody  
 Second Ab: 0.2µg/mL HRP-Linked Caprine Anti-Rabbit IgG Polyclonal Antibody (Catalog: SAA544Rb19)



Western Blot; Sample: Lane1: Human Placenta lysate; Lane2: Porcine Heart lysate; Lane3: Porcine Kidney lysate; Lane4: Porcine Liver lysate; Lane5: Rat Placenta lysate; Lane6: Rat Heart lysate; Lane7: Rat Liver lysate  
 Primary Ab: 3µg/ml Rabbit Anti-Rat NOS3 Antibody  
 Second Ab: 0.2µg/mL HRP-Linked Caprine Anti-Rabbit IgG Polyclonal Antibody (Catalog: SAA544Rb19)

**[ IMPORTANT NOTE ]**

The kit is designed for research use only, we will not be responsible for any issue if the kit was used in clinical diagnostic or any other procedures.