

**RPB834Mu01 100µg**

**Recombinant Coagulation Factor XI (F11)**

**Organism Species: *Mus musculus* (Mouse)**

***Instruction manual***

FOR RESEARCH USE ONLY

NOT FOR USE IN CLINICAL DIAGNOSTIC PROCEDURES

---

12th Edition (Revised in Aug, 2016)

**[ PROPERTIES ]**

**Source:** Prokaryotic expression

**Host:** *E.coli*

**Residues:** Pro157~Arg389

**Tags:** N-terminal His Tag

**Subcellular Location:** Secreted

**Purity:** > 90%

**Traits:** Freeze-dried powder

**Buffer formulation:** 20mM Tris, 150mM NaCl, pH8.0, containing 0.01% SKL, 5% Trehalose.

**Original Concentration:** 200µg/mL

**Applications:** Positive Control; Immunogen; SDS-PAGE; WB.

(May be suitable for use in other assays to be determined by the end user.)

**Predicted isoelectric point:** 9.3

**Predicted Molecular Mass:** 29.9kDa

**Accurate Molecular Mass:** 30kDa as determined by SDS-PAGE reducing conditions.

**[ USAGE ]**

Reconstitute in 20mM Tris, 150mM NaCl (pH8.0) to a concentration of 0.1-1.0 mg/mL. Do not vortex.

**[ STORAGE AND STABILITY ]**

**Storage:** Avoid repeated freeze/thaw cycles.

Store at 2-8°C for one month.

Aliquot and store at -80°C for 12 months.

**Stability Test:** The thermal stability is described by the loss rate. The loss rate was determined by accelerated thermal degradation test, that is, incubate the protein at 37°C for 48h, and no obvious degradation and precipitation were observed. The loss rate is less than 5% within the expiration date under appropriate storage condition.

**[ SEQUENCE ]**

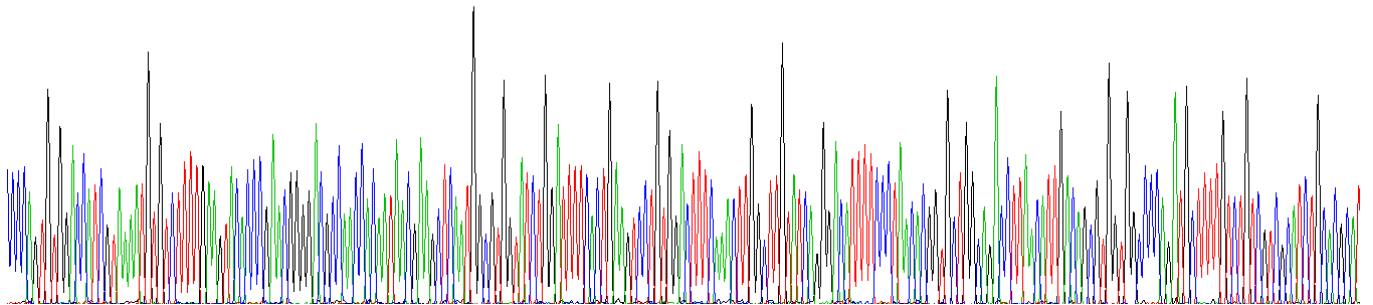
```

PSVD HRKMCLLKYT RTGTPPTITK LNGVVS GFSL KSCGLSNLAC
IRDIFPNTVL ADLNIDSVVA PDAFVCRRIC THHPTCLFFT FFSQAWPKES
QRHLCLLKTS ESGLPSTRIT KSHALSGFSL QHCRHSVPVF CHPSFYNDTD
FLGEELDIVD VKQETCQKT CTNNARCQFF TYYP SHRLCN ERNRRGRCYL
KLSSNGSPTR ILHGRGGISG YSLRLCKMDN VCTTKINPR
    
```

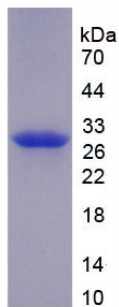
**[ IDENTIFICATION ]**

```

TTCGTTGGACATCGTAAAGTGTCTTTGAGTACCCGAMCGGGACGCACCCCAATAAGACTCAATGGGGTATCTGGATTTTCTGAGTCTGTGGACTTCAACTTGGCTTGTAGGGACATTTTCCTAACAGGTCCTGGAGACTTAACTTGAAGAGCGTGTGGTGGCCGAGTCTTGTGCTGTGGATCTCAGCAT
P S V D H R K M C L L K Y T R T G T P T T I T K L N G V V S G F S L K S C G L S N L A C I R D I F P N T V L A D L N I D S V V A P D A F V C R R I C T H
    
```



**Figure. Gene Sequencing (Extract)**



**Figure. SDS-PAGE**

**[ IMPORTANT NOTE ]**

The kit is designed for research use only, we will not be responsible for any issue if the kit was used in clinical diagnostic or any other procedures.