

**RPD405Hu01 100µg**

**Recombinant Phosphofructokinase, Muscle (PFKM)**

**Organism Species: *Homo sapiens* (Human)**

***Instruction manual***

FOR RESEARCH USE ONLY

NOT FOR USE IN CLINICAL DIAGNOSTIC PROCEDURES

---

12th Edition (Revised in Aug, 2016)

**[ PROPERTIES ]**

**Source:** Prokaryotic expression

**Host:** *E.coli*

**Residues:** Thr2~His390

**Tags:** N-terminal His Tag

**Subcellular Location:** Cytoplasm

**Purity:** > 97%

**Traits:** Freeze-dried powder

**Buffer formulation:** 20mM Tris, 150mM NaCl, pH8.0, containing 1mM EDTA, 1mM DTT, 0.01% SKL, 5% Trehalose and Proclin300.

**Original Concentration:** 200µg/mL

**Applications:** Positive Control; Immunogen; SDS-PAGE; WB.

(May be suitable for use in other assays to be determined by the end user.)

**Predicted isoelectric point:** 6.1

**Predicted Molecular Mass:** 46.3kDa

**Accurate Molecular Mass:** 46kDa as determined by SDS-PAGE reducing conditions.

**[ USAGE ]**

Reconstitute in 20mM Tris, 150mM NaCl (pH8.0) to a concentration of 0.1-1.0 mg/mL. Do not vortex.

**[ STORAGE AND STABILITY ]**

**Storage:** Avoid repeated freeze/thaw cycles.

Store at 2-8°C for one month.

Aliquot and store at -80°C for 12 months.

**Stability Test:** The thermal stability is described by the loss rate. The loss rate was determined by accelerated thermal degradation test, that is, incubate the protein at 37°C for 48h, and no obvious degradation and precipitation were observed. The loss rate is less than 5% within the expiration date under appropriate storage condition.

**[ SEQUENCE ]**

THEEHHEAK TLGIGKAIIV LTSGGDAQGM NATVRAVVRV GIFTGLRVFF  
VHEGYQGLVD GGEHIREATW ESVSMMLQLG GTVIGSARCK DFREREGRLR  
AAHNLVKRGI TNLCVIGGDG SLTGADTFRS EWSDLLNDLQ KDGKITAEER  
TKSSYLNIVF LVGSIDNDFC GTDMTIGTDS ALHRIVEIVD AITTTAQSHQ  
RTFVLEV MGR HCGYLALVTS LSCGADWVFI PECPPDDDWE EHLCRRLSET  
RTRGSRLNII IVAEGAIDKN GKPITSEDIK NLVVKRLGYD TRVTVLGHVQ  
RGGTPSAFDR ILGSRMGVEA VMALLEGTPD TPACVVSLSG NTAVRLPLME  
CVQVTKDVTK AMDEKRFDEA IKLRGRSFMN NWEVYKLLAH

**[ IDENTIFICATION ]**

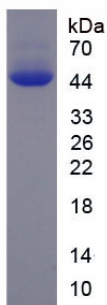


Figure. SDS-PAGE

**[ IMPORTANT NOTE ]**

The kit is designed for research use only, we will not be responsible for any issue if the kit was used in clinical diagnostic or any other procedures.