



**MAA010Hu22**

**Monoclonal Antibody to Connective Tissue Growth Factor (CTGF)**

**Organism Species: Homo sapiens (Human)**

***Instruction manual***

FOR IN VITRO USE AND RESEARCH USE ONLY  
NOT FOR USE IN CLINICAL DIAGNOSTIC PROCEDURES

---

---

12th Edition (Revised in Aug, 2016)



## [ PROPERTIES ]

**Source:** Monoclonal antibody preparation

**Host:** Mouse

**Antibody isotype:** IgG2b Kappa

**Purification:** Protein A/G Affinity Chromatography.

**Clone number:** 4-2#

**Traits:** Liquid

**Concentration:** 500µg/mL

**UOM:** 200µg

**Applications:** WB; IHC; ICC; IP.

## [ IMMUNOGEN ]

**Immunogen:** Recombinant CTGF (Glu248~Ala349) expressed in *E.coli*.

**Accession No.:** RPA010Hu01

## [ APPLICATIONS ]

Western blotting: 0.5-5µg/mL

Immunohistochemistry: 5-30µg/mL

Immunocytochemistry: 5-30µg/mL

Optimal working dilutions must be determined by end user.

## [ FORMULATION ]

**Form & Buffer:** Supplied as solution form in 0.01M PBS, pH7.4, containing 0.05% Proclin-300, 50% glycerol.

## [ QUALITY CONTROL ]

**Content:** The quality control contains recombinant CTGF disposed in loading buffer.

**Usage:** 10uL per well when 3,3'-Diaminobenzidine (DAB) as the substrate.  
5uL per well when used in enhanced chemiluminescent (ECL).

**Note:** The quality control is specifically manufactured as the positive control. Not used for other purposes.

**Loading Buffer:** 100mM Tris(pH6.8), 1% SDS, 150mM NaCl, 50% glycerol, 0.02% BPB, 50mM DTT and 0.02% NaN<sub>3</sub>.

## **[ STORAGE AND STABILITY ]**

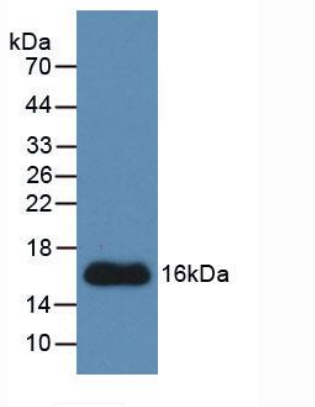
**Storage:** Avoid repeated freeze/thaw cycles.

Store at 4°C for frequent use.

Aliquot and store at -20°C for 12 months.

**Stability Test:** The thermal stability is described by the loss rate. The loss rate was determined by accelerated thermal degradation test, that is, incubate the protein at 37°C for 48h, and no obvious degradation and precipitation were observed. The loss rate is less than 5% within the expiration date under appropriate storage condition.

## **[ IDENTIFICATION ]**



**Figure 1. Western Blot**

**Sample: Recombinant CTGF, Human**