

**MAA222Po21****Monoclonal Antibody to Interferon Beta (IFN $\beta$ )****Organism Species: *Sus scrofa*; Porcine (Pig)*****Instruction manual***

FOR IN VITRO USE AND RESEARCH USE ONLY

NOT FOR USE IN CLINICAL DIAGNOSTIC PROCEDURES

11th Edition (Revised in May, 2016)

**[ PROPERTIES ]****Source:** Monoclonal antibody preparation**Host:** Mouse**Antibody isotype:** IgG1 Kappa**Purification:** Protein A/G Affinity Chromatography.**Clone number:** 2#**Traits:** Liquid**Concentration:** 500 $\mu$ g/mL**UOM:** 200 $\mu$ g**Applications:** WB; ICC; IHC-P; IHC-F; ELISA; IP; IF; FCM.**[ IMMUNOGEN ]****Immunogen:** RPA222Po01-Recombinant Interferon Beta (IFN $\beta$ )**[ APPLICATIONS ]**Western blotting: 0.5-5 $\mu$ g/mlImmunocytochemistry in formalin fixed cells: 5-30 $\mu$ g/mlImmunohistochemistry in formalin fixed frozen section: 5-30 $\mu$ g/mlImmunohistochemistry in paraffin section: 5-30 $\mu$ g/mlEnzyme-linked Immunosorbent Assay: 0.05-2 $\mu$ g/ml

Optimal working dilutions must be determined by end user.

**[ FORMULATION ]****Form & Buffer:** Supplied as solution form in PBS, pH7.4, containing 0.02% NaN $_3$ , 50% glycerol.

## [ QUALITY CONTROL ]

**Content:** The quality control contains recombinant IFN $\beta$  disposed in loading buffer.

**Usage:** 10uL per well when 3,3'-Diaminobenzidine (DAB) as the substrate.  
5uL per well when used in enhanced chemiluminescent (ECL).

**Note:** The quality control is specifically manufactured as the positive control. Not used for other purposes.

**Loading Buffer:** 100mM Tris(pH6.8), 1% SDS, 150mM NaCl, 50% glycerol, 0.02% BPB, 50mM DTT and 0.02% NaN $_3$ .

## [ STORAGE AND STABILITY ]

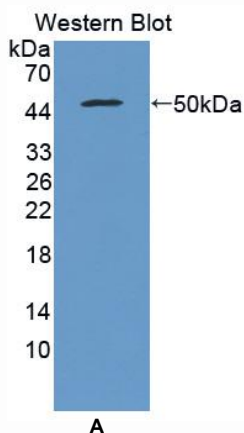
**Storage:** Avoid repeated freeze/thaw cycles.

Store at 4°C for frequent use.

Aliquot and store at -20°C for 12 months.

**Stability Test:** The thermal stability is described by the loss rate. The loss rate was determined by accelerated thermal degradation test, that is, incubate the protein at 37°C for 48h, and no obvious degradation and precipitation were observed. The loss rate is less than 5% within the expiration date under appropriate storage condition.

## [ IDENTIFICATION ]



**Figure 1. Western Blot**

**A. Sample: Recombinant IFN $\beta$ , Porcine**