

MAA485Mi21

Monoclonal Antibody to N-Terminal Pro-Brain Natriuretic Peptide (NT-ProBNP)

Organism Species: *Mus musculus* (Mouse)

***Rattus norvegicus* (Rat)**

Instruction manual

FOR IN VITRO USE AND RESEARCH USE ONLY
NOT FOR USE IN CLINICAL DIAGNOSTIC PROCEDURES

12th Edition (Revised in Aug, 2016)

[**PROPERTIES**]

Source: Monoclonal antibody preparation

Host: Mouse

Antibody isotype: IgG2a Kappa

Purification: Protein A/G Affinity Chromatography.

Clone number: C2

Traits: Liquid

Concentration: 500µg/mL

UOM: 200µg

Applications: WB; IHC; ICC; IP.

[**IMMUNOGEN**]

Immunogen: Synthetic Peptide, NT-ProBNP conjugated to OVA

Accession No.: CPA485Mu21

Sequence: The target peptide sequence is listed below.

LELIRE

KSEEMAQRQL

[**ORGANISM SPECIES MORE**]

React with: Mouse, rat. Other species have not been detected.

[**APPLICATIONS**]

Western blotting: 0.5-5µg/mL

Immunohistochemistry: 5-30µg/mL

Immunocytochemistry: 5-30µg/mL

Optimal working dilutions must be determined by end user.

[**FORMULATION**]

Form & Buffer: Supplied as solution form in 0.01M PBS, pH7.4, containing 0.05% Proclin-300, 50% glycerol.

[**STORAGE AND STABILITY**]

Storage: Avoid repeated freeze/thaw cycles.

Store at 4°C for frequent use.

Aliquot and store at -20°C for 12 months.

Stability Test: The thermal stability is described by the loss rate. The loss rate was determined by accelerated thermal degradation test, that is, incubate the protein at 37°C for 48h, and no obvious degradation and precipitation were observed. The loss rate is less than 5% within the expiration date under appropriate storage condition.

[**IDENTIFICATION**]

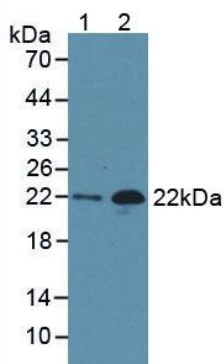


Figure 1. Western Blot

Sample:

Lane1: Human Serum

Lane2: Rat Heart Tissue

Primary Ab: 3µg/mL Mouse Anti-Human NT-ProBNP Ab

Second Ab: 1:5000 Dilution of HRP-Linked Rabbit

Anti-Mouse IgG Ab (Catalog: SAA544Mu09)