

**PAA833Hu01**

**Polyclonal Antibody to Von Willebrand Factor (vWF)**

**Organism Species: Homo sapiens (Human)**

***Instruction manual***

FOR IN VITRO USE AND RESEARCH USE ONLY

NOT FOR USE IN CLINICAL DIAGNOSTIC PROCEDURES

---

---

11th Edition (Revised in May, 2016)

## **[ PROPERTIES ]**

**Source:** Polyclonal antibody preparation

**Host:** Rabbit

**Purification:** Antigen-specific Affinity Chromatography.

**Traits:** Liquid

**Concentration:** 200µg/mL

**UOM:** 100µg

**Applications:** WB; ICC; IHC-P; IHC-F; ELISA; IP; IF; FCM.

## **[ IMMUNOGEN ]**

**Immunogen:** Recombinant vWF (Asp1498~Val1665) expressed in *E.coli*.

**Accession No.:** RPA833Hu01

## **[ APPLICATIONS ]**

Western blotting: 0.5-2ug/ml

Immunocytochemistry in formalin fixed cells: 5-20ug/ml

Immunohistochemistry in formalin fixed frozen section: 5-20ug/ml

Immunohistochemistry in paraffin section: 5-20ug/ml

Enzyme-linked Immunosorbent Assay: 0.05-2ug/ml

Optimal working dilutions must be determined by end user.

## **[ FORMULATION ]**

**Form & Buffer:** Supplied as solution form in PBS, pH7.4, containing 0.02% NaN<sub>3</sub>, 50% glycerol.

## [ **STORAGE AND STABILITY** ]

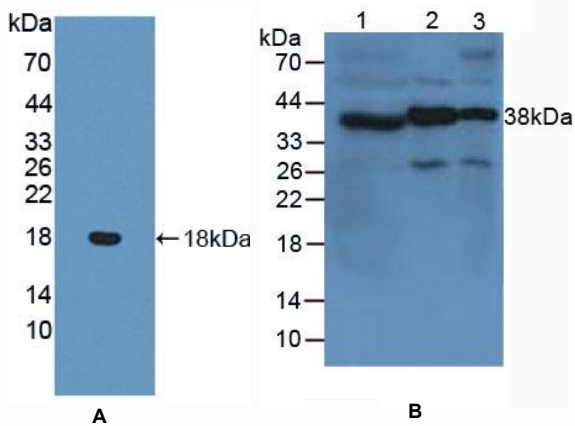
**Storage:** Avoid repeated freeze/thaw cycles.

Store at 4°C for frequent use.

Aliquot and store at -20°C for 12 months.

**Stability Test:** The thermal stability is described by the loss rate. The loss rate was determined by accelerated thermal degradation test, that is, incubate the protein at 37°C for 48h, and no obvious degradation and precipitation were observed. The loss rate is less than 5% within the expiration date under appropriate storage condition.

## [ **IDENTIFICATION** ]



**Figure 1. Western Blot**

**A. Sample: Recombinant vWF, Human**

**B. Lane1: Human Blood platelet Cells**

**Lane2: Mouse Brain Tissue**

**Lane3: Mouse Spinal Cord Tissue**

**Primary Ab: 2µg/mL Rabbit Anti-Human vWF Ab**

**Second Ab: 1:2000 Dilution of HRP-Linked Guinea pig**

**Anti-Rabbit Ab (Catalog: SAA544Rb59)**