

PAB833Hu01

Polyclonal Antibody to Complement Factor D (CFD)

Organism Species: Homo sapiens (Human)

Instruction manual

FOR IN VITRO USE AND RESEARCH USE ONLY

NOT FOR USE IN CLINICAL DIAGNOSTIC PROCEDURES

11th Edition (Revised in May, 2016)

[PROPERTIES]

Source: Polyclonal antibody preparation

Host: Rabbit

Purification: Antigen-specific Affinity Chromatography.

Traits: Liquid

Concentration: 200µg/mL

UOM: 100µg

Applications: WB; ICC; IHC-P; IHC-F; ELISA; IP; IF; FCM.

[IMMUNOGEN]

Immunogen: Recombinant CFD (Met1~Ala253) expressed in *E.coli*.

Accession No.: RPB833Hu01

[APPLICATIONS]

Western blotting: 0.5-2ug/ml

Immunocytochemistry in formalin fixed cells: 5-20ug/ml

Immunohistochemistry in formalin fixed frozen section: 5-20ug/ml

Immunohistochemistry in paraffin section: 5-20ug/ml

Enzyme-linked Immunosorbent Assay: 0.05-2ug/ml

Optimal working dilutions must be determined by end user.

[FORMULATION]

Form & Buffer: Supplied as solution form in PBS, pH7.4, containing 0.02% NaN₃, 50% glycerol.

[STORAGE AND STABILITY]

Storage: Avoid repeated freeze/thaw cycles.

Store at 4°C for frequent use.

Aliquot and store at -20°C for 12 months.

Stability Test: The thermal stability is described by the loss rate. The loss rate was determined by accelerated thermal degradation test, that is, incubate the protein at 37°C for 48h, and no obvious degradation and precipitation were observed. The loss rate is less than 5% within the expiration date under appropriate storage condition.

[IDENTIFICATION]

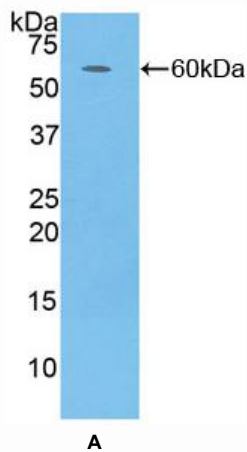


Figure 1. Western Blot

A. Sample: Recombinant CFD, Human