

PAH781Hu01
Polyclonal Antibody
To Immunoglobulin Superfamily Containing Leucine Rich Repeat Protein (ISLR)
Organism Species: Homo sapiens (Human)
Instruction manual

FOR IN VITRO USE AND RESEARCH USE ONLY
NOT FOR USE IN CLINICAL DIAGNOSTIC PROCEDURES

12th Edition (Revised in Aug, 2016)

[PROPERTIES]

Source: Polyclonal antibody preparation

Host: Rabbit

Purification: Antigen-specific Affinity Chromatography.

Traits: Liquid

Concentration: 200µg/mL

UOM: 100µg

Applications: WB; IHC; ICC; IP.

[IMMUNOGEN]

Immunogen: Recombinant ISLR (Cys19~Phe428) expressed in *E.coli*.

Accession No.: RPH781Hu01

[APPLICATIONS]

Western blotting: 0.5-2µg/mL

Immunocytochemistry in formalin fixed cells: 5-20µg/mL

Immunohistochemistry in formalin fixed frozen section: 5-20µg/mL

Immunohistochemistry in paraffin section: 5-20µg/mL

Optimal working dilutions must be determined by end user.

[FORMULATION]

Form & Buffer: Supplied as solution form in 0.01M PBS, pH7.4, containing 0.05% Proclin-300, 50% glycerol.

[QUALITY CONTROL]

Content: The quality control contains recombinant ISLR disposed in loading buffer.

Usage: 10uL per well when 3,3'-Diaminobenzidine(DAB) as the substrate.
5uL per well when used in enhanced chemiluminescent (ECL).

Note: The quality control is specifically manufactured as the positive control. Not used for other purposes.

Loading Buffer: 100mM Tris(pH6.8), 1% SDS, 150mM NaCl, 50% glycerol, 0.02% BPB, 50mM DTT and 0.02% NaN₃.

[**STORAGE AND STABILITY**]

Storage: Avoid repeated freeze/thaw cycles.

Store at 4°C for frequent use.

Aliquot and store at -20°C for 12 months.

Stability Test: The thermal stability is described by the loss rate. The loss rate was determined by accelerated thermal degradation test, that is, incubate the protein at 37°C for 48h, and no obvious degradation and precipitation were observed. The loss rate is less than 5% within the expiration date under appropriate storage condition.

[**IDENTIFICATION**]

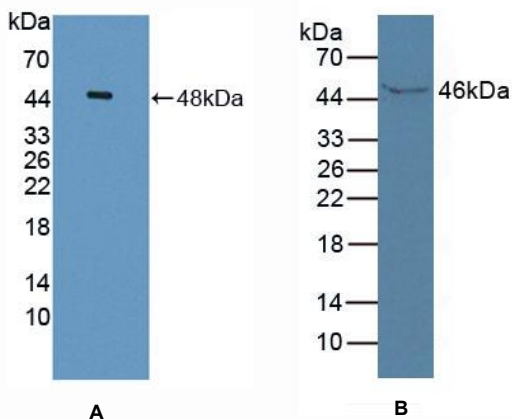


Figure 1. Western Blot

A. Sample: Recombinant ISLR, Human

B. Human Serum

Primary Ab: 2µg/mL Rabbit Anti-Human ISLR Ab

**Second Ab: 1:2000 Dilution of HRP-Linked Guinea pig
Anti-Rabbit Ab (Catalog: SAA544Rb59)**

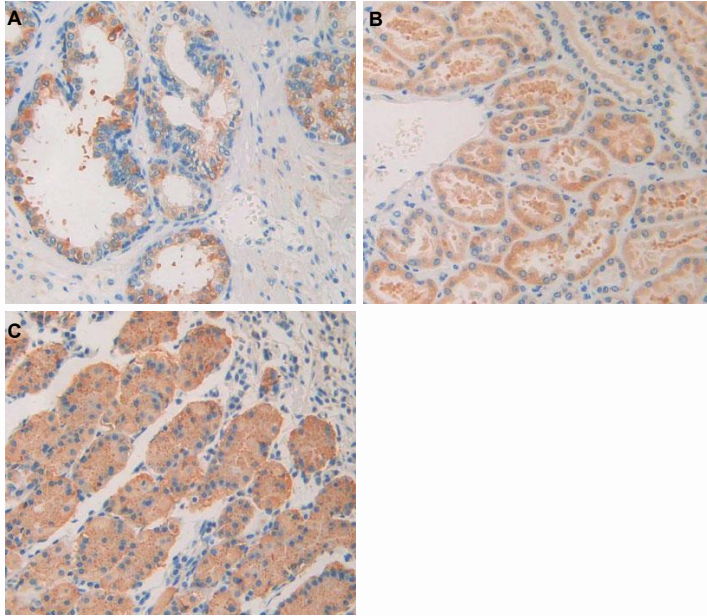


Figure 2. DAB staining on IHC-P

Samples:

- A. Human Prostate Gland Tissue**
- B. Human Kidney Tissue**
- C. Human Stomach Tissue**