

RPB979Hu01 10µg

Recombinant Hecpidin (Hepc)

Organism Species: Homo sapiens (Human)

Instruction manual

FOR IN VITRO USE AND RESEARCH USE ONLY

NOT FOR USE IN CLINICAL DIAGNOSTIC PROCEDURES

11th Edition (Revised in May, 2016)

[PROPERTIES]

Source: Prokaryotic expression.

Host: *E. coli*

Residues: Ser25~Thr84

Tags: N-terminal His-Tag

Tissue Specificity: Liver, Heart, Brain.

Subcellular Location: Secreted.

Purity: >98%

Traits: Freeze-dried powder

Buffer formulation: 20mM Tris, 150mM NaCl, pH8.0, containing 1mM EDTA, 1mM DTT, 0.01% sarcosyl, 5%Trehalose and Proclin300.

Original Concentration: 200ug/mL

Applications: SDS-PAGE; WB; ELISA; IP; CoIP; Reporter Assays; Purification; Amine Reactive Labeling.

(May be suitable for use in other assays to be determined by the end user.)

Predicted isoelectric point: 8.2

Predicted Molecular Mass: 12.6kDa

Accurate Molecular Mass: 16kDa as determined by SDS-PAGE reducing conditions.

Phenomenon explanation:

The possible reasons that the actual band size differs from the predicted are as follows:

1. Splice variants: Alternative splicing may create different sized proteins from the same gene.

2. Relative charge: The composition of amino acids may affects the charge of the protein.
3. Post-translational modification: Phosphorylation, glycosylation, methylation etc.
4. Post-translation cleavage: Many proteins are synthesized as pro-proteins, and then cleaved to give the active form.
5. Polymerization of the target protein: Dimerization, multimerization etc.

[USAGE]

Reconstitute in 20mM Tris, 150mM NaCl (pH8.0) to a concentration of 0.1-1.0 mg/mL. Do not vortex.

[STORAGE AND STABILITY]

Storage: Avoid repeated freeze/thaw cycles.

Store at 2-8°C for one month.

Aliquot and store at -80°C for 12 months.

Stability Test: The thermal stability is described by the loss rate. The loss rate was determined by accelerated thermal degradation test, that is, incubate the protein at 37°C for 48h, and no obvious degradation and precipitation were observed. The loss rate is less than 5% within the expiration date under appropriate storage condition.

[SEQUENCE]

SVFPQQ TGQLAELQPQ DRAGARASWM
PMFQRRRRR THFPICIFCC GCCHRSKCGM CCKT

[IDENTIFICATION]

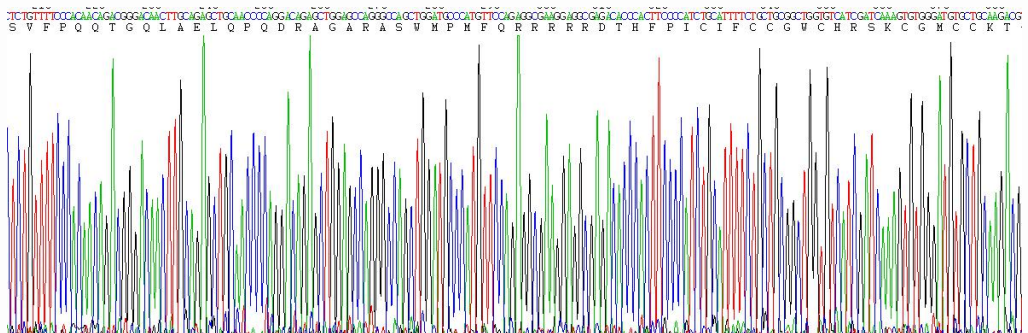


Figure 1. Gene Sequencing (Extract)

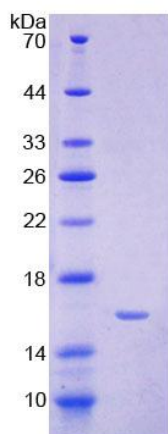


Figure 2. SDS-PAGE