

**RPC444Hu01 50µg**  
**Recombinant Dystrobrevin Binding Protein 1 (DTNBP1)**  
**Organism Species: Homo sapiens (Human)**  
***Instruction manual***

FOR IN VITRO USE AND RESEARCH USE ONLY  
NOT FOR USE IN CLINICAL DIAGNOSTIC PROCEDURES

---

12th Edition (Revised in Aug, 2016)

## [ **PROPERTIES** ]

**Source:** Prokaryotic expression.

**Host:** *E. coli*

**Residues:** Gln100~Ser351

**Tags:** N-terminal His-Tag

**Tissue Specificity:** Placenta, Brain, Lung.

**Subcellular Location:** Cell Junction, cell Membrane, cytoplasmic Vesicle, endoplasmic Reticulum, endosome, membrane, nucleus.

**Purity:** >93%

**Traits:** Freeze-dried powder

**Buffer formulation:** 20mM Tris, 150mM NaCl, pH8.0, containing 1mM EDTA, 1mM DTT, 0.01% sarcosyl, 5%Trehalose and Proclin300.

**Original Concentration:** 200µg/mL

**Applications:** Positive Control; Immunogen; SDS-PAGE; WB.

(May be suitable for use in other assays to be determined by the end user.)

**Predicted isoelectric point:** 4.3

**Predicted Molecular Mass:** 31.9kDa

**Accurate Molecular Mass:** 40kDa as determined by SDS-PAGE reducing conditions.

### **Phenomenon explanation:**

The possible reasons that the actual band size differs from the predicted are as follows:

1. Splice variants: Alternative splicing may create different sized proteins from the same gene.
2. Relative charge: The composition of amino acids may affects the charge of the protein.
3. Post-translational modification: Phosphorylation, glycosylation, methylation etc.
4. Post-translation cleavage: Many proteins are synthesized as pro-proteins, and then cleaved to give the active form.
5. Polymerization of the target protein: Dimerization, multimerization etc.

## [ **USAGE** ]

Reconstitute in 20mM Tris, 150mM NaCl (pH8.0) to a concentration of 0.1-1.0 mg/mL. Do not vortex.

## [ STORAGE AND STABILITY ]

**Storage:** Avoid repeated freeze/thaw cycles.

Store at 2-8°C for one month.

Aliquot and store at -80°C for 12 months.

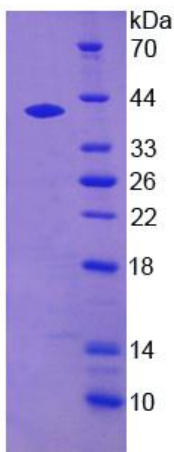
**Stability Test:** The thermal stability is described by the loss rate. The loss rate was determined by accelerated thermal degradation test, that is, incubate the protein at 37°C for 48h, and no obvious degradation and precipitation were observed. The loss rate is less than 5% within the expiration date under appropriate storage condition.

## [ SEQUENCE ]

Q

LQQLPALIAD LESMTANLTH LEASFEEVEN NLLHLEDLCG QCELERCKHM  
 QSQQLENYKK NKRKELETFK AELDAEHAQK VLEMEHTQQM KLKERQKFFE  
 EAFQQDMEQY LSTGYLQIAE RREPIGSMSS MEVNVDMLEQ MDLMDISDQE  
 ALDVFLNSGG EENTVLSPAL GPESSTCQNE ITLQVPNPSE LRAKPPSSSS  
 TCTDSATRDI SEGGESPVVQ SDEEEVQVDT ALATSHTDRE ATPDGGEDSD  
 S

## [ IDENTIFICATION ]



**Figure 1. SDS-PAGE**